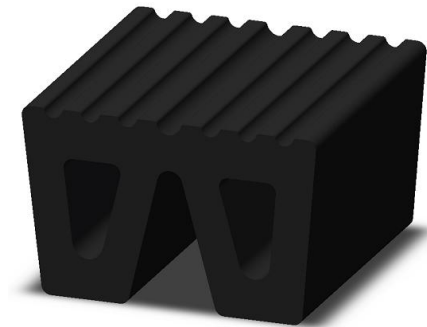
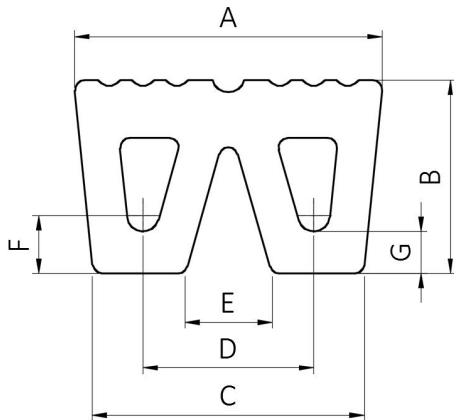


W Rubber Fender

■ Features

1. Special for ship and can be curved around bow.
2. Large contact area and low surface pressure.



■ Specification

Type	Dimensions							
	A	B	C	D	E	F	G	Max. Length
GW 320-200	320	200	280	180	100	67	50	3000
GW 400-250	400	250	350	220	110	75	55	3000
GW 480-300	480	300	420	270	145	90	65	3000
GW 500-450	500	450	420	270	145	100	75	3000

Note: Other specification out of the series can be produced upon request.

■ Performance

