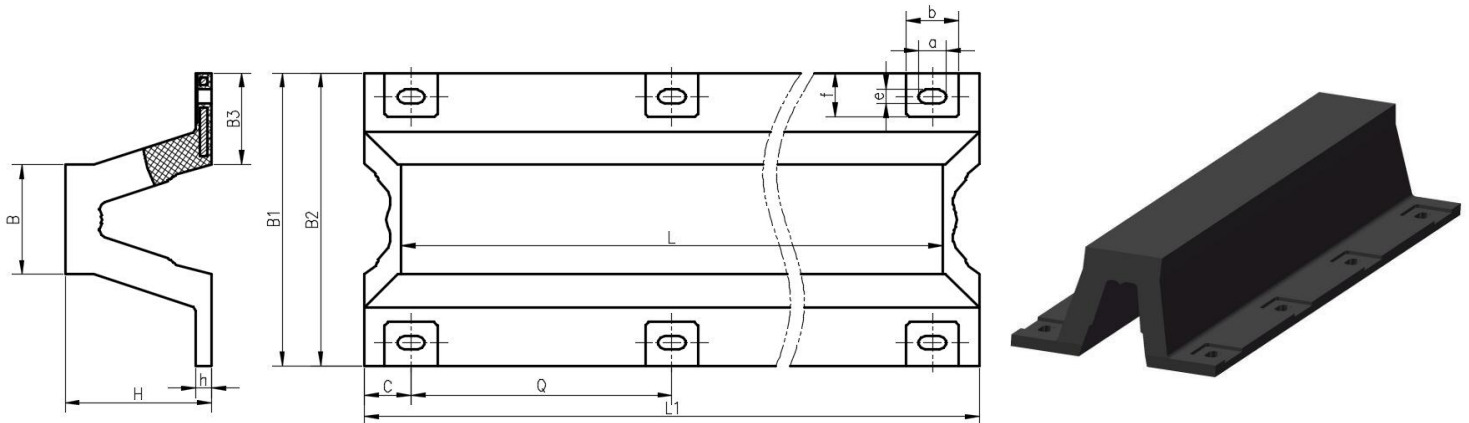




## Super Arch Fender

### ■ Features

1. Low reaction force and high energy absorption.
2. Easy installation and convenient replacement.
3. Reasonable design and long usage life.



### ■ Specification

Type	H	L	L1	B	B1	B2	B3	C	Q	h	a	b	e	f
GSA 150x1000	150	1000	1075	98	240	300	96	110	855	22.5	50	95	25	55
GSA 150x1500	150	1500	1575	98	240	300	96	112.5	675	22.5	50	95	25	55
GSA 150x2000	150	2000	2075	98	240	300	96	215	620	22.5	50	95	25	55
GSA 150x2500	150	2500	2575	98	240	300	96	220	785	22.5	50	95	25	55
GSA 150x3000	150	3000	3075	98	240	300	96	215	715	22.5	50	95	25	55
GSA 150x3500	150	3500	3575	98	240	300	96	220	671	22.5	50	95	25	55
GSA 200x1000	200	1000	1100	145	320	400	128	120	860	30	58	105	29	75
GSA 200x1500	200	1500	1600	145	320	400	128	120	680	30	58	105	29	75
GSA 200x2000	200	2000	2100	145	320	400	128	120	620	30	58	105	29	75
GSA 200x2500	200	2500	2600	145	320	400	128	122.5	785	30	58	105	29	75
GSA 200x3000	200	3000	3100	145	320	400	128	120	715	30	58	105	29	75
GSA 200x3500	200	3500	3600	145	320	400	128	120	672	30	58	105	29	75
GSA 250x1000	250	1000	1125	164	410	500	160	130	865	30	64	125	32	90
GSA 250x1500	250	1500	1625	164	410	500	160	132.5	680	30	64	125	32	90
GSA 250x2000	250	2000	2125	164	410	500	160	132.5	620	30	64	125	32	90



GSA 250x2500	250	2500	2625	164	410	500	160	127.5	790	30	64	125	32	90
GSA 250x3000	250	3000	3125	164	410	500	160	132.5	715	30	64	125	32	90
GSA 250x3500	250	3500	3625	164	410	500	160	130	673	30	64	125	32	90
GSA 300x1000	300	1000	1150	225	490	600	195	140	870	33	70	140	35	105
GSA 300x1500	300	1500	1650	225	490	600	195	140	685	33	70	140	35	105
GSA 300x2000	300	2000	2150	225	490	600	195	137.5	625	33	70	140	35	105
GSA 300x2500	300	2500	2650	225	490	600	195	140	790	33	70	140	35	105
GSA 300x3000	300	3000	3150	225	490	600	195	145	715	33	70	140	35	105
GSA 300x3500	300	3500	3650	225	490	600	195	140	674	33	70	140	35	105
GSA 400x1000	400	1000	1200	300	670	800	260	150	900	40	82	165	41	120
GSA 400x1500	400	1500	1700	300	670	800	260	150	700	40	82	165	41	120
GSA 400x2000	400	2000	2200	300	670	800	260	147.5	635	40	82	165	41	120
GSA 400x2500	400	2500	2700	300	670	800	260	150	800	40	82	165	41	120
GSA 400x3000	400	3000	3200	300	670	800	260	150	725	40	82	165	41	120
GSA 400x3500	400	3500	3700	300	670	800	260	150	680	40	82	165	41	120
GSA 500x1000	500	1000	1250	375	840	1000	325	160	930	45	94	180	47	140
GSA 500x1500	500	1500	1750	375	840	1000	325	160	715	45	94	180	47	140
GSA 500x2000	500	2000	2250	375	840	1000	325	157.5	645	45	94	180	47	140
GSA 500x2500	500	2500	2750	375	840	1000	325	160	810	45	94	180	47	140
GSA 500x3000	500	3000	3250	375	840	1000	325	165	730	45	94	180	47	140
GSA 500x3500	500	3500	3750	375	840	1000	325	160	686	45	94	180	47	140
GSA 600x1000	600	1000	1300	450	1010	1200	390	170	960	54	100	195	50	160
GSA 600x1500	600	1500	1800	450	1010	1200	390	170	730	54	100	195	50	160
GSA 600x2000	600	2000	2300	450	1010	1200	390	167.5	655	54	100	195	50	160
GSA 600x2500	600	2500	2800	450	1010	1200	390	170	820	54	100	195	50	160
GSA 600x3000	600	3000	3300	450	1010	1200	390	170	740	54	100	195	50	160
GSA 600x3500	600	3500	3800	450	1010	1200	390	170	692	54	100	195	50	160
GSA 800x1000	800	1000	1400	600	1340	1600	520	180	1040	72	136	270	68	260
GSA 800x1500	800	1500	1900	600	1340	1600	520	180	770	72	136	270	68	260
GSA 800x2000	800	2000	2400	600	1340	1600	520	180	680	72	136	270	68	260
GSA 800x2500	800	2500	2900	600	1340	1600	520	182.5	845	72	136	270	68	260
GSA 800x3000	800	3000	3400	600	1340	1600	520	180	760	72	136	270	68	260
GSA 1000x1000	1000	1000	1500	750	1680	2000	650	200	1100	90	136	290	68	300



GSA 1000x1500	1000	1500	2000	750	1680	2000	650	200	800	90	136	290	68	300
GSA 1000x2000	1000	2000	2500	750	1680	2000	650	200	700	90	136	290	68	300

Note: Other specification out of the series can be produced upon request.

## ■ Performance

Performance Specification		52.5% Rated Deflection			
		Reaction Force(KN)		Energy Absorption(KN-M)	
		RO Standard Type	RH High Reaction Force Type	RO Standard Type	RH High Reaction Force Type
GSA 150	87.7	147	4.1	6.1	
GSA 200	114	156	8.2	11.2	
GSA 250	179	216	18.8	22.8	
GSA 300	209	254	25.5	31.6	
GSA 400	281	339	46.9	57.1	
GSA 500	351	423	73.4	89.5	
GSA 600	420	508	106	129	
GSA 800	561	677	189	228	
GSA 1000	703	846	295	356	

Performance Specification		55% Rated Deflection			
		Reaction Force(KN)		Energy Absorption(KN-M)	
		RO Standard Type	RH High Reaction Force Type	RO Standard Type	RH High Reaction Force Type
GSA 150	117	157	5.1	7.1	
GSA 200	156	208	9.2	12.2	
GSA 250	249	300	19.8	24	
GSA 300	300	353	27.4	33.7	
GSA 400	361	469	50	61.2	
GSA 500	487	588	78.5	94.9	
GSA 600	590	706	113	138	
GSA 800	779	940	202	254	
GSA 1000	975	1176	317	381	

Note: Performance tolerance is  $\pm 10\%$ .



## ■ Performance Curve

